

Installation Guide

Please make sure that all Windows and TSR applications are closed before installing Market Leader. You do not need to create a new directory prior to installation – the installation program will do this for you.

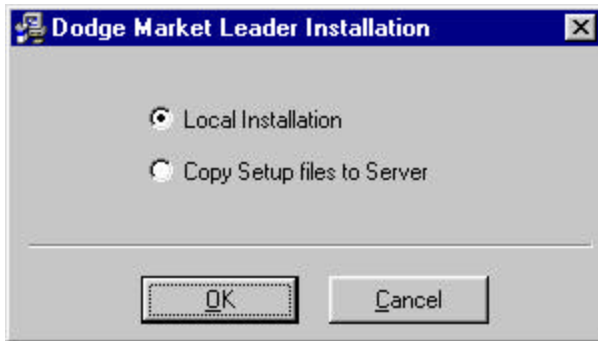
Local Installation

1. Close all programs that you currently have open.
2. Insert the Market Leader CD into your CD drive. The CD menu program will open in a few moments if your PC is configured to play CDs automatically.

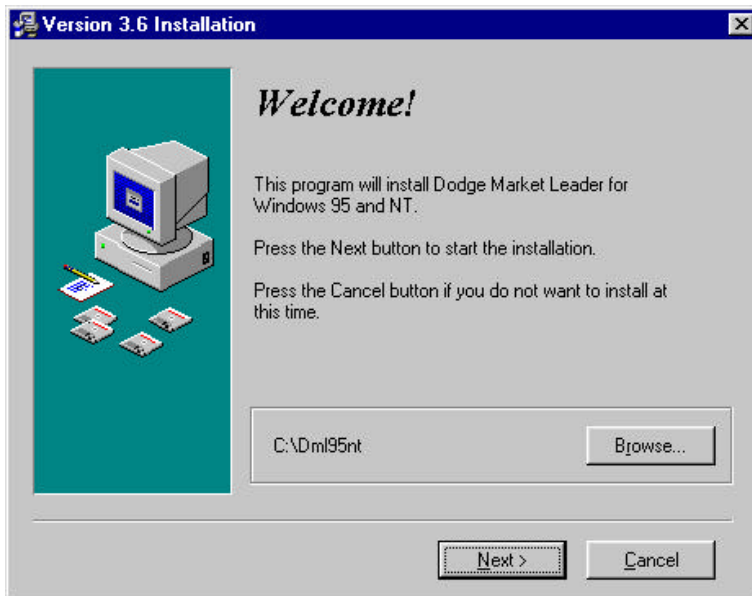


3. If the CD menu program does not open after a few moments, open the Run dialog box from the Windows taskbar and type or browse for the file *dodge.exe* on the CD. Then, click the *OK* button to open the CD menu program.
4. Click the *Install Market Leader* option to open the actual installation program.

5. Once the installation program is opened, the following dialog box will open.

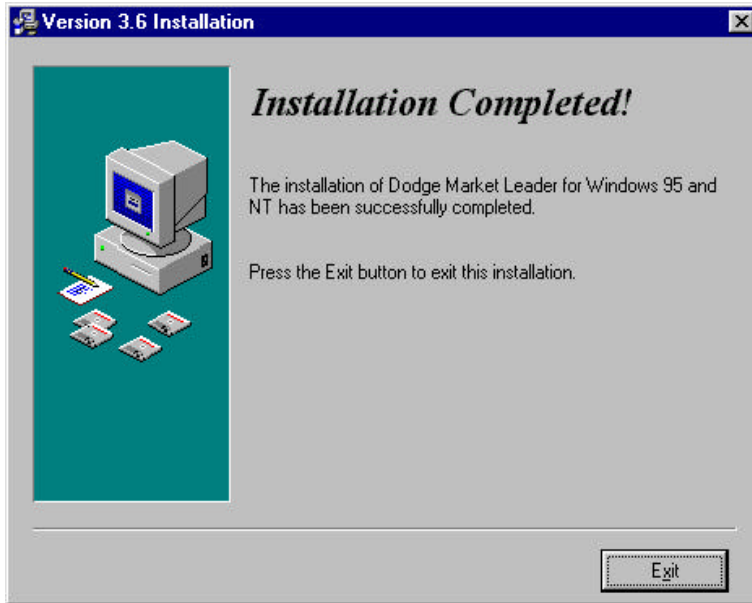


6. Select the *Local Installation* option and click the *OK* button.
7. The Welcome dialog box will appear, with a default installation directory chosen. If you have a previous version of Market Leader already installed, then the installation program will choose that directory. To choose a different directory, click the *Browse* button and a dialog box will open, allowing you to select another destination.



8. Click the *Next >* button to start the installation.
9. The Backup Replaced Files dialog box will appear, with the default option being Yes. It is recommended that you do not change this setting. Click the *Next >* button to continue.
10. The Select Backup Directory dialog box will appear, with a default backup directory chosen. It is recommended that you do not change this directory. Click the *Next >* button to continue.
11. The Ready to Install dialog box will appear. Click the *Next >* button to continue, or the *Cancel* button to abandon the installation.

12. The Installing dialog box will appear, showing the progress of the installation. At this point, there is nothing for you to do but monitor the installation until the first Installation Complete dialog box appears. When it does, click the *OK* button to close it.
13. The second Installation Completed dialog box will appear. Click the *Exit* button to close the installation program. The Market Leader program and release notes will both be opened automatically. However, Windows may require you to reboot the system to allow changes to take effect before you can begin using Market Leader.



14. The CD menu program will still be open, so click *Exit* to close it. If it is not visible, then first click on F.W. Dodge Setup on the Windows taskbar to make it visible.

Server Installation

If you have multiple users who will be installing Market Leader, you can copy the setup files to a common server on your LAN. Then, all the users can install Market Leader from there rather than from a CD.

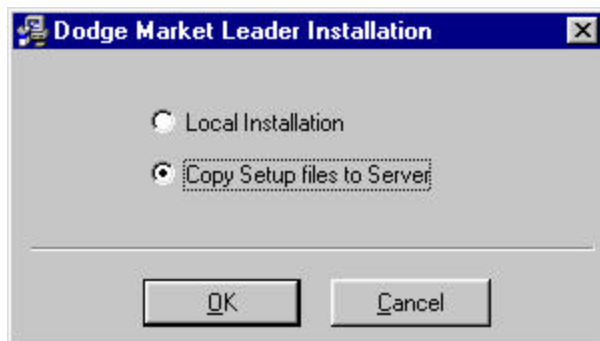
Once the setup files are installed to a server, instruct each user to run the installation program (*setup.exe*) from that location, and to follow the **Local Installation** steps – beginning with step 5.

1. Close all programs that you currently have open.

2. Insert the Market Leader CD into your CD drive. The CD menu program will open in a few moments if your PC is configured to play CDs automatically.

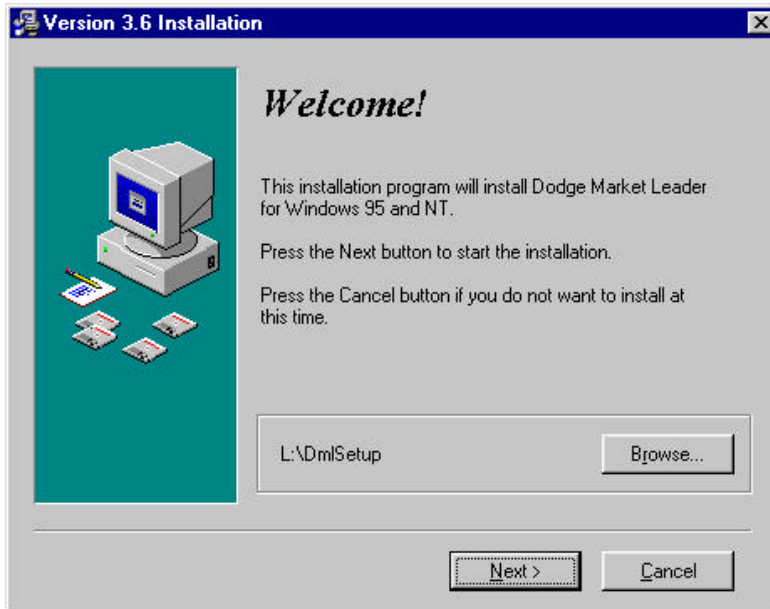


3. If the CD menu program does not open after a few moments, open the Run dialog box from the Windows taskbar and type or browse for the file *dodge.exe* on the CD. Then, click the OK button to open the CD menu program.
4. Click the *Install Market Leader* option to open the actual installation program.
5. Once the installation program is opened, the following dialog box will open.



6. Select the *Copy Setup files to Server* option and click the OK button.

- The Welcome dialog box will appear, with a default installation directory chosen. The default installation directory will be the root directory on first network drive you have mapped. To choose a different directory, click the *Browse* button and a dialog box will open, allowing you to select another destination. Be sure to select a directory on a network drive.



- Click the *Next >* button to start the installation.
- The Ready to Install dialog box will appear. Click the *Next >* button to continue, or the *Cancel* button to abandon the installation.
- The Installing dialog box will appear, showing the progress of the installation. At this point, there is nothing for you to do but monitor the installation until the Setup Complete dialog box appears. When it does, click the *OK* button to close the installation program.
- The CD menu program will still be open, so click *Exit* to close it. If it is not visible, then first click on F.W. Dodge Setup on the Windows taskbar to make it visible.

Upgrade Installation

An upgrade installation requires that you have a previously installed version of Market Leader on your PC because it will only install files that have changed in this version.

Automatic Upgrade

When Market Leader starts up, it looks in the download directory (as specified in the Dial Up feature) for an upgrade file. If it finds one, you are prompted to decide whether to run it right then. If you choose yes, then Market Leader shuts itself down and runs the upgrade. The installation program re-starts Market Leader upon completion. When Market Leader re-starts, the upgrade file is renamed so that it is not found again.

For more information, follow the steps for a **Local Installation** – beginning with step 5.

From CD

Follow the steps for a **Local Installation**, however click the *Install Market Leader Upgrade* option from the CD menu program instead.

Other

If you acquired an upgrade file via email or from our web site for example, then can run it manually.

1. Open the Run dialog box from the Windows taskbar and type or browse for the upgrade file on your PC. Then, click the *OK* button to open the installation program.
2. Follow the **Local Installation** steps – beginning with step 5.

Uninstall

If you need to uninstall the program, from the Windows taskbar click *Start/Programs/Dodge Market Leader for Windows 95 and NT/Uninstall*, and follow the instructions of the Uninstall Wizard.